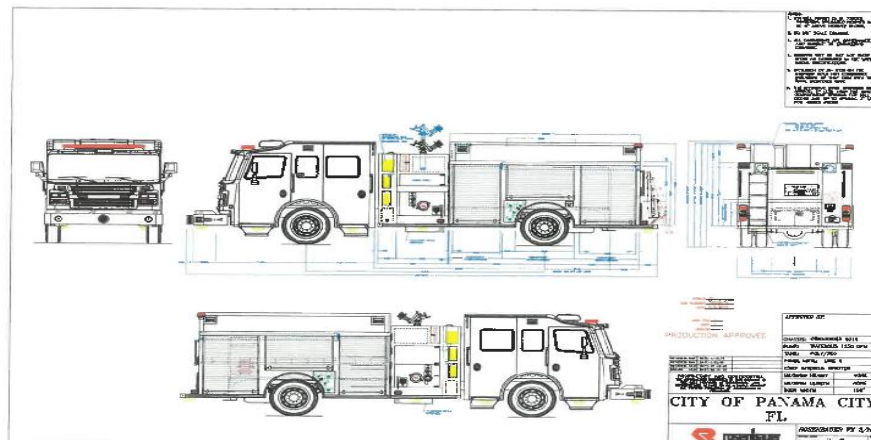


# City of Panama City Fire Department

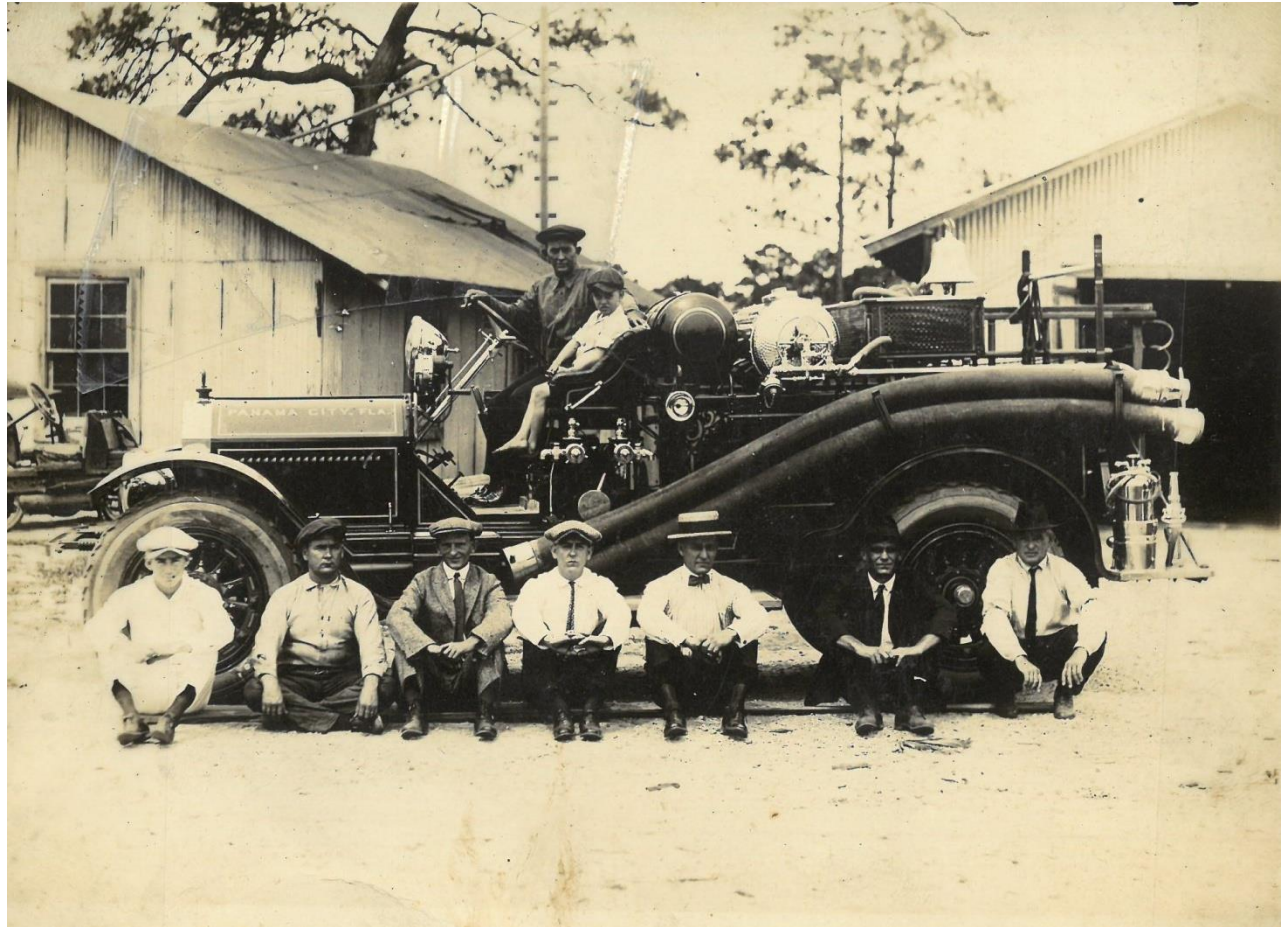


## Commander FX Pumpers



# A Little History

- Believed to be Panama City's first fire engine.
- American LaFrance
- Circa 1918 to 1920.



In Photo: Robert L. Caswell, J.W. Jenkins, Terry S., Jim Richards, Albert Jenkins, Tom D., Northon Davis, J.W. Renfrai, G.B. Jones.

# Project Information

- Agreement signed on or about January 23, 2018 with Rosenbauer and Leasing2.
- Purchase Price \$719,408.
- Annual Payments over six years. \$136,943.32.
- First payment was made in November 2019.
- This is a lease purchase using Leasing2 as the leasing agent.

# Project Goals

- Standardize our fleet of fire apparatus:
  - 1995 Pierce Pumper (1) Reserve
  - 2000 KME Pumper (2) Reserve
  - 2003 American LaFrance Pumper (2)
  - 2006 KME Platform Aerial (1)
  - 2012 Rosenbauer Aerial (1)
  - 2013/2014 Rosenbauer Pumper (2)
  - 2014 Rosenbauer Rescue (1)
- Re-establish our fire apparatus replacement schedule.
- These will replace the two American LaFrance Pumpers.

# Apparatus Information

- Rosenbauer Commander FX Body.
- Cummings Engine.
- Waterous Pumps.



# Deliver Date

- Contract signed on January 23, 2018 for two Rosenbauer Commander Pumpers.
- Delivery date to be 395 days from contract signing. Date of delivery to be February 22, 2020.
- Specifications cite a penalty fee of \$100/day if apparatus are delivered after February 22, 2020.

# Construction Status

- Chassis are complete.
- Electrical completed on January 10, 2020.
- Body to be completed by January 17, 2020.
- Body to be placed onto chassis by January 24, 2020.



# Delay in Delivery Date



- Due to a delay in obtaining the tanks for the apparatus there is an expected delay in delivery.
- Rosenbauer expects to deliver in mid-March.
- Penalty fee will go into effect on February 23<sup>rd</sup>.



# Various Photos



# Future Considerations

- Fire Administration recommends establishing a Reserve Account to be utilized to fund the future purchase of apparatus, specialized equipment and fire stations.